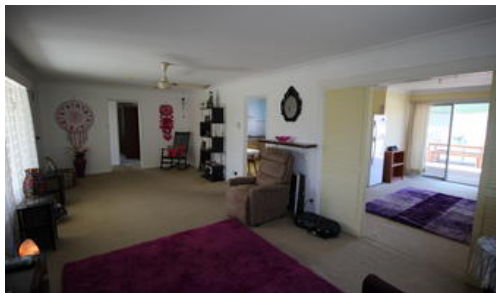




153 Liverpool St, Scone



**\*\*GREAT INVESTMENT/RETIREMENT/ FIRST HOME \*\***

- \* LOCATED EASY WALKING DISTANCE TO TOWN CENTRE
- \* THREE (3) BEDROOMS MAIN WITH ENSUITE
- \* RENOVATED KITCHEN WALL OVEN DOUBLE SINK/PANTRY
- \* LARGE LOUNGE ROOM WITH SPLIT R/C A/C
- \* SEPARATE DINING/FAMILY ROOM
- \* REAR DECK AREA OFF THE LIVING AREA
- \* SECURE FLAT 660SQM BLOCK

DON'T MISS THIS ONE, OFFERS BEING RECEIVED

INSPECTION BY APPOINTMENT

3 2 2

<b>Price</b>	SOLD
<b>Property Type</b>	residential
<b>Property ID</b>	535
<b>Land Area</b>	660 m2

#### Agent Details

Patrick Gleeson - 0408689949

#### Office Details

Scone  
109 Kelly St Scone NSW 2337  
Australia  
0408689949

The above information provided has been furnished to us by the vendor/s. We have not verified whether or not that information is accurate and do not have any belief in one way or the other in its accuracy. We do not accept any responsibility to any person for its accuracy and do no more than pass it on. All interested parties should make and rely upon their own inquiries in order to determine whether or not this information is in fact accurate.

